

## Physico-chemical evaluation of soil resources in different regions of Taza – Taounate, Morocco

Sanae Rezouki<sup>1,2,\*</sup>, Aimad Allali<sup>1,2</sup>, Bouchra Louasté<sup>3</sup>, Noureddine Eloutassi<sup>2</sup> and Mohamed Fadli<sup>1</sup>

<sup>1</sup> Laboratory of Plant, Animal and Agro-industry Productions, Faculty of Sciences, University of Ibn Tofail, Kenitra, Morocco

<sup>2</sup> Laboratory of Engineering, Molecular Organometallic Materials and Environment, Faculty of Sciences Dhar El Mahraz (FSDM), Sidi Mohamed Ben Abdellah University, Fez-Morocco and Regional Center for the Trades of Education and Training (CRMEF), Fez-Morocco

<sup>3</sup> Laboratory of Biotechnology, Environment, Agri-food and Health, Faculty of Sciences Dhar El Mahraz, Sidi Mohamed Ben Abdellah University, Fez-Morocco

**Abstract:** The area studied Taza-Taounate is a vast mountain range in north-central Morocco, characterized by a variation in bio-geographical factors that encourage a vibrant and diversified vegetation cover with a remarkable rate of endemism compared to Moroccan flora. Our work involves the physicochemical analysis of soils at seven stations in the study area. Three surface soil samples (0-15 cm) were collected and analyzed for physical and chemical parameters using standard laboratory techniques at each station.

The results showed the clay fraction's dominance in S2 and S3 and the silt fraction in stations S1, S4, S5, S6, and S7. The studied soils have low levels of organic carbon (0.97% to 2.29%), high levels of CaCO<sub>3</sub> (10.1% to 24.9%), and neutral and slightly alkaline pH (7.01 to 7.81). The most dominant element in all stations is calcium exchangeable, with values ranging from 51.52 to 74.91 cmol+/kg. The other exchangeable basic cations (Mg<sup>2+</sup>, Na<sup>+</sup>, K<sup>+</sup>) have relatively low levels. CEC values vary between 36.12 and 81.13 cmol+/kg, indicating that our soil type is heavy to organic.

**Keywords:** Organic matter; pH; Texture; CEC; Exchangeable bases.

### 1. Introduction

Nature is full of resources with virtues beneficial to humans. It is generally known that natural resources play an important role in productive and income-generating activities and offer social and economic development<sup>1</sup>. The conservation and development of those resources presuppose a precise knowledge of that heritage.

Soils are one of the earth's natural resources essential for agricultural development and ecological sustainability. They are precious natural mines, even though they are often neglected or poorly managed.

Worldwide, climate plays a determining role in distributing major vegetal formations<sup>2,3</sup>, though other factors can sometimes play a dominant position, such as human intervention, paleo-climatic variations, and edaphic influences<sup>4,5</sup>. The valorization of soil resources is an essential objective for man, as it increases the quantity and quality of arable soils, facilitates environmental management, and improves the productivity of cultivated soils<sup>6</sup>. The physicochemical properties of natural soils

develop under natural conditions through biotic and abiotic factors over a long period. These properties influence soil fertility and soil productivity; they determine the water retention capacity, the penetration capacity of roots, the ease of water absorption by plants, and the movement of gases in the soil. Soil physical properties also influence forest tree species' distribution, growth, and forest agricultural biomass<sup>7</sup>.

Some plant nutrients and minerals exist as positively charged ions, or "cations", in the soil. Some of them are most important for plants, affecting plant species' growth and development, including nitrogen, phosphorus, and potassium. Among the most common cations found in soils are hydrogen (H<sup>+</sup>), aluminum (Al<sup>3+</sup>), calcium (Ca<sup>2+</sup>), magnesium (Mg<sup>2+</sup>), and potassium (K<sup>+</sup>). Soil pH, a measure of the active hydrogen ion (H<sup>+</sup>), indicates the acidity or alkalinity of forest soils and is also known as the "soil reaction". The most important soil pH effect is on ionic solubility, which affects microbial and plants growth<sup>7</sup>.

\*Corresponding author: Sanae Rezouki

Email address: [rezoukisanare@gmail.com](mailto:rezoukisanare@gmail.com)

DOI: <http://dx.doi.org/10.13171/mjc10902011111537sr>

Received August 24, 2020

Accepted October 9, 2020

Published November 11, 2020

The Taza-Taounate region constitutes a biogeographical unit that forms an entirely original natural setting. By its great geographical contrasts and diversity of geological features, the region offers a varied range of bioclimates that allow the installation of a rich flora with considerable endemism compared to the Moroccan flora in general. However, this region suffers from local development failure even though it is rich in natural resources, mainly aromatic and medicinal plants. In order to develop aromatic and medicinal plants in the Taza-Taounate region, the soil's physicochemistry is one of the ecological factors that determine plants' distribution in the environment <sup>8</sup> and influences the yield and biochemical composition of the essential oils of these plants. This influence is mainly due either to the soil's physical characteristics, its texture, or its structure <sup>9</sup>.

To better understand the soil resources of Taza-Taounate (Northern Morocco), the physicochemical

characteristics of seven representative sites covering the entire plant biodiversity have been evaluated to enable sustainable management of this natural environment.

## 2. Methods and Analyses

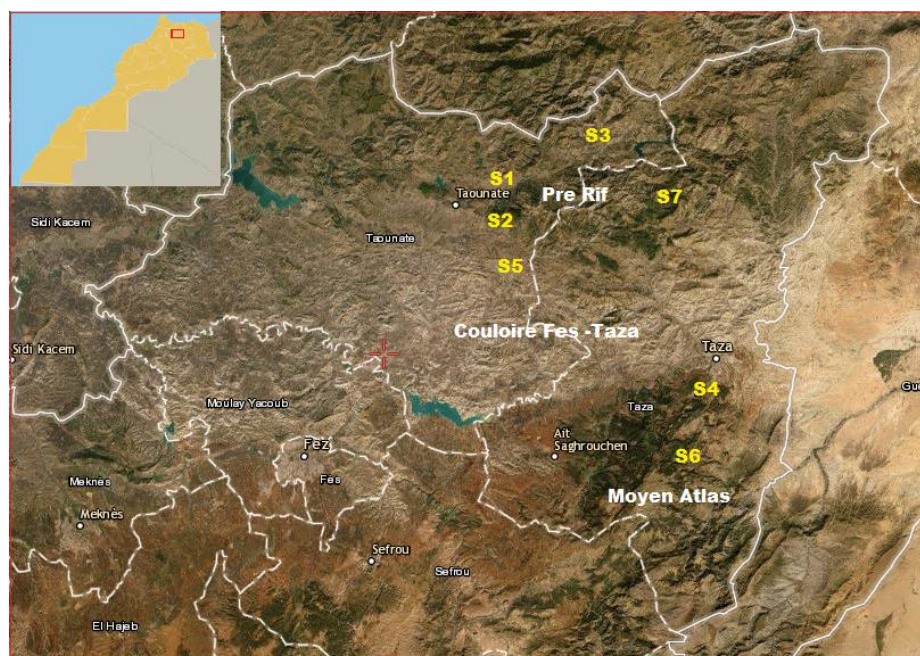
### 2.1. Study areas

The study area is located in the Fez-Meknes region, including two administrative provinces, Taza and Taounate (Fig 1 and Table 1). The climate of Taza-Taounate region is warm and temperate. The winter is characterized by much more rainfall than in the summer. This location is classified as Csa (warm mild climate with summer dry (Mediterranean) by Köppen and Geiger <sup>10, 11</sup>.

The average annual temperature in Taza is 17.9°C and 17.0°C in Taounate. The rainfall averages 563 mm per year in Taza and 655 mm in Taounate (Fig. 3 and 4) <sup>12</sup>.

**Table 1.** Geographic and climatic data for the study regions.

Stations	Latitudes	Longitudes	Average precipitation	Average
<b>S1 : Bouadel</b>	34°32'24"N	4°30'27.36" E	612	16.6
<b>S2: Ain Madyouna</b>	34°29'54.175"N	4°32'54.74"E	601	18.0
<b>S3: Ther Souk</b>	34° 39'7.56" N	4° 16'43.032" E	517.2	18.1
<b>S4: Ras Lma</b>	34° 8'47.303" N	4° 0'57.701" E	456	12.1
<b>S5: Ras Elouad</b>	34°23'20.901"N	4°30'0.565"E	543	18.9
<b>S6: Chiker</b>	34° 4'10.147" N	4° 5'23.063" E	606	10.4
<b>S7: Tainaste</b>	34° 31'54.853" N	4° 7'38.813" E	521	14.1



□ Taza-Taounate area

S1 : Bouadel , S2 : Ain Madouna , S3 : Ther Souk , S4 : Ras Lma , S5 Ras ElOquad , S6 : Chiker (Bab Boudir) , S7 : Tainaste.

**Figure 1.** Geographic location of the study area

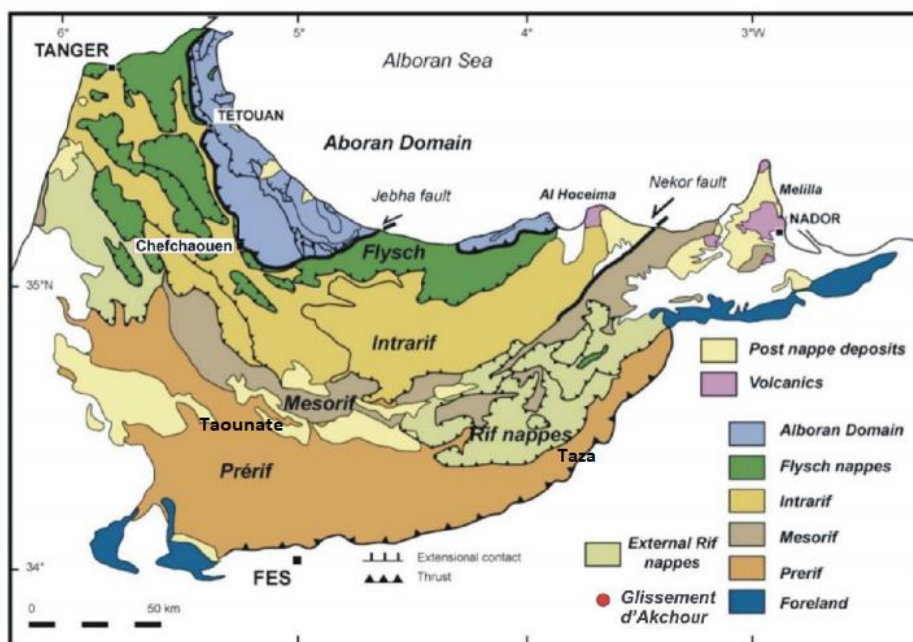


Figure 2. Geological map of the study area <sup>14</sup>

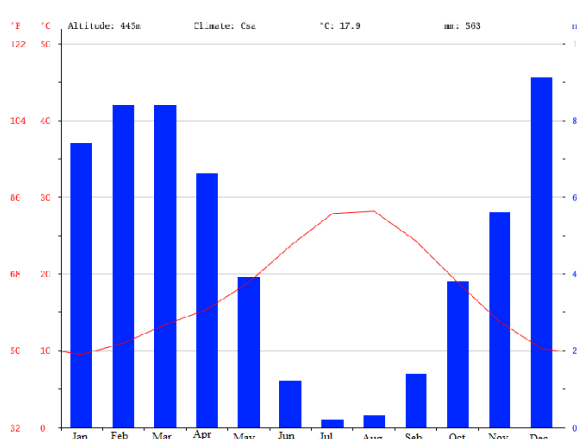


Figure 3. Climate diagram of Taza

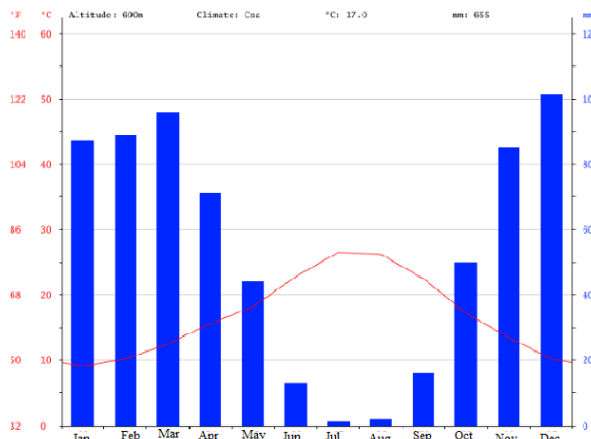


Figure 4. Climate diagram of Taounate

### 2.1.2. Sampling and Analyses

Three soil samples were collected from seven different stations/villages for 21 surface soil samples taken at Taza-Taounate. Soil samples were collected using a hand auger. The soil was dug down to 20 cm deep in a V-shape. This depth represents the soil where most of the roots are located and where nutrient absorption occurs. The field is traversed in a zig-zag pattern by taking sub-samples (composite sample) at random throughout the field area.

Various analyses were carried out at the laboratory level, including air drying, sieving, and soil analysis.

### 2.1.3. Particle size distribution

In the present study, all samples were dried at 40°C while grinding, and sieving was done at 2 mm. The destruction of the aggregates was carried out by oxygenated water. A series of screens carried out the separation of the different classes of particles with mesh sizes of 2 mm, 1 mm, 500 μm, 250 μm, 125 μm, and 63 μm to recover the very coarse,

coarse, medium, fine, and very fine soil fractions respectively. The operating procedure is that of ASTM D-422 with some modifications <sup>15</sup>.

### 2.1.4. Soil pH, Conductivity, and Moisture

Soil humidity was calculated by the difference between fresh and dry weight <sup>16</sup> after drying 1 g of the soil sample in an oven for 24 hours at 105°C. The percentage is determined as follows:

$$H\% = \frac{P_f - P_s}{P_s} \times 100$$

Where H % = humidity in the field; P<sub>f</sub> = fresh weight of the sample before drying; P<sub>s</sub> = dry weight of the sample after drying.

The pH (pH-H<sub>2</sub>O and pH-KCl) (hydrogen potential) was determined by the method of <sup>17</sup>; the conductivity measurement was carried out with a Hanna HI2316 conductivity meter.

### 2.1.5. Soil organic matter

We determined the soil organic matter using Walkley and Black <sup>18</sup>, which consists of oxidizing the organic fraction of carbon by a mixture of potassium dichromates in an acidic medium. The organic matter rate is estimated by multiplying the percentage of organic carbon by factor 1.724.

### 2.1.6. Carbonate

We have adopted the calcium carbonate (CaCO<sub>3</sub>) solubilization method by the acid (HCl) attack <sup>16</sup> under the same temperature and pressure conditions, and then the CO<sub>2</sub> volume released was measured using Bernard's calcimeter.

### 2.1.7. Exchangeable Cations, Cation exchange capacity

Exchangeable bases: by saturation with 1N ammonium acetate solution adjusted to pH=7. The cation determination was carried out by atomic absorption and flame photometer; cation exchange capacity (CEC): determined by the sodium acetate method.

### 2.1.8. available phosphorus

According to the Olsen 1965 method, available phosphorus was determined, and the Nitrates-N was determined by chromotropic acid.

## 2.2. Statistical analysis

To compare the values of different variables (physicochemical parameters) between study sites, means  $\pm$  standard deviations (SD) are calculated based on raw data from the samples taken. The data were subjected to an analysis of unidirectional variance (ANOVA) at the significance level  $P \leq 0.05$  in order to determine the difference between the group's extreme values. Fisher's Least Significant Difference (LSD) test was used to separate significant from non-significant averages at  $\alpha = 0.05$ .

Uni-variate (Correlation tests) and multi-variate (Hierarchical classification) statistical analyses were carried out on these data to determine the different correlations existing between these parameters.

## 3. Results

### 3.1. Soil physical characteristics of study sites

Table 2 shows the results of the physical characteristics of the soils at seven study sites. The particle size analysis shows the clay fraction's dominance in S2 and S3 and the silt fraction in stations S1, S4, S5, S6, and S7. Quantitatively, the clay content reaches the maximum values of 48.3% and 42.9% in S3 and S2, respectively, while the silt percentage is very high in station S4 with a value of 41.2%.

**Table 2.** Soil mechanical composition and textural classes.

Parameters Stations	Clay (%)	Silt (%)	Sands (%)			Soil texture
			<i>Fs</i>	<i>Ms</i>	<i>Cs</i>	
<b>S1 : Bouadel</b>	23,1 $\pm$ 0.2 <sup>a</sup>	63,9 $\pm$ 2.7 <sup>a</sup>	4,8 $\pm$ 0.17 <sup>a</sup>	7,56 $\pm$ 0.45 <sup>a</sup>	29,5 $\pm$ 0.66 <sup>a</sup>	loam
<b>S2 : Ain Madyouna</b>	42,8 $\pm$ 1.4 <sup>b</sup>	25,6 $\pm$ 0.6 <sup>b</sup>	19,8 $\pm$ 0.98 <sup>b</sup>	6,5 $\pm$ 0.61 <sup>b</sup>	5,35 $\pm$ 0.5 <sup>b</sup>	clay
<b>S3 : Ther Souk</b>	48,4 $\pm$ 1.9 <sup>c</sup>	22,4 $\pm$ 1 <sup>c</sup>	2,7 $\pm$ 0.28 <sup>c</sup>	11,36 $\pm$ 0.55 <sup>c</sup>	15,3	clay
<b>S4 : Ras Lma</b>	23,6 $\pm$ <sup>a</sup>	41,2 $\pm$ 0.8 <sup>d</sup>	4 $\pm$ 0.31 <sup>a</sup>	15,89 $\pm$ 0.38 <sup>d</sup>	15,3 $\pm$ 0.78 <sup>c</sup>	Loam
<b>S5 : Ras ElOquad</b>	20,7 $\pm$ 0.7 <sup>d</sup>	37,4 $\pm$ 1.8 <sup>e</sup>	12 $\pm$ 0.84 <sup>d</sup>	13,56 $\pm$ 0.45 <sup>e</sup>	16,2 $\pm$ 0.78 <sup>c</sup>	loam
<b>S6 : Chiker (Bab Boudir)</b>	24 $\pm$ 1 <sup>a</sup>	34,7 $\pm$ 1.2 <sup>f</sup>	7,46 $\pm$ 0.55 <sup>e</sup>	12,6 $\pm$ 0.62 <sup>e</sup>	21,1 $\pm$ 0.9 <sup>d</sup>	loam
<b>S7 : Tainaste</b>	19,9 $\pm$ 0.5 <sup>d</sup>	34,6 $\pm$ 1.5 <sup>f</sup>	7,26 $\pm$ 0.75 <sup>e</sup>	12,66 $\pm$ 0.65 <sup>e</sup>	25,3 $\pm$ 0.45 <sup>e</sup>	loam

*Fs: fine sand, Ms: medium sand, Cs: coarse sand*

## 3.2. Soil chemical characteristics

### 3.2.1. pH, Moisture and ionic Conductivity

Soil pH measurement is used to define its acidity or alkalinity. According to <sup>19</sup> international standards, our results show that Bouadel's soil is alkaline, whereas other soils are only slightly basic. The soil pH values found in these different stations ranged from a minimum value of 7.01 in Tainaste, to a maximum value of 7.81 recorded in Bouadel (Table 3).

Humidity is proportional to soil texture; clay soils are very humid while sandy soils are less humid. All study sites are composed of moist soil with a maximum value of 15.9% at Ther Souk and a minimum value of 11.1% at Tainaste (Table 3).

Conductivity measurement showed that Ras ELOquad soil was more conductive with a 275.89  $\mu$ s/cm value than the other study sites.

### 3.2.2. Organic Matter and Carbonate Content

There is significant variation in the organic matter levels from station to station. The highest rate is recorded at Ras ELOquad 2.29% and the lowest at Ras Lma 0.97% (Table 3).

Table 4 also shows that the soils in our study region are very rich in limestone with 25% maximum in Tainaste and Bab Boudir, followed by 23% in Ras Lma, then Ain Madyouna and Bouadel with 18%.

### 3.2.3. Exchangeable bases

The most dominant element is calcium, representing 60% to 70% of the exchangeable cations in all stations. The highest levels were present in Ras ELOuad and Thar Souk. At Ther Souk and Ras ELOuad, the magnesium content is relatively high, while potassium and sodium show low levels at all stations (Table 3).

### 3.2.4. Cation exchange capacity

In generally, CEC values are relatively high, in Ras ELOuad and Ther Souk around 81.13 cmole/kg and

80.32 cmole/kg. These values fall to 57.89 cmole/kg, 56.12 cmole/kg 38.09 cmole/kg and 36.12 cmole/kg in Ain Madyouna, Bouadel, Ras Lma, Tainaste and Bab Boudir (Table 3).

### 3.2.5. Nitrates and Assimilable Phosphorus

Assimilable phosphorus is significant at all stations, with a maximum value recorded at Tainaste and a minimum value recorded at Ras Lma. It is deficient for nitrate compared to the phosphorus value at all stations, with a minority value recorded at Tainaste (Table 3).

**Table 3.** Physico-chemical parameters of soil resources at different stations.

Stations Settings	S1 : Bouadel	S2 : Ain Madyouna	S3 : Ther Souk	S4 : Ras Lma	S5 : Ras ELOuad	S6 : (Bab Chiker)	S7 : Tainaste
H (%)	12,2±0,2a	14,09±0,4 b	15,9±0,5 c	11,2±0,4 d	11,3±0,3 d	12,3±0,4a	11,1±0,6 d
EC (µS/Cm)	176,39±4,14 a	153,39±6,63 b	198,5±5,81 c	153,46±5,28b	275,56±4,6 d	131,55±2,95 e	145,87±4,1 b
pH <sub>H2O</sub>	7,81±0,04a	7,13±0,03 b	7,02±0,03 c	7,52±0,04 d	7,72±0,05 e	7,71±0,03 e	7±0,06 c
pH <sub>KCl</sub> 1M of soil	6,89±0,05 a	7,11±0,02 b	6,26±0,04c	7,17±0,03b	11,76±0,25 e	7,38±0,04e	6,66±0,05f
CaCO <sub>3</sub> (%)	17,56±0,25 a	18,67±0,35 b	10,1±0,4 c	22,93±0,45 d	11,76±0,25 e	24,9±0,26 f	24,9±0,2 f
OM (%)	1,97±0,03 a	1,89±0,05 b	2,03±0,04 a	0,96±0,05 d	2,29±0,05 c	1,85±0,05 b	1,04±0,04 d
Ca <sup>2+</sup>	61,6±0,71a	62,3±0,75 a	68,6±1,55 b	57,5±2,42 c	74,6±1,71 d	56,8±1,97 c	51,6±1,65 e
Mg <sup>2+</sup>	1,68±0,02 a	1,73±0,04 a	11,45±1,57 b	10,59±1,47 b	1,74±0,05 a	2,18±0,22 a	1,71±0,06 a
Na <sup>+</sup>	0,4±0,03a	0,3±0,02 a	13,09±1,9 b	0,29±0,03a	1,27±0,03a	0,2±0,02 a	0,19±0,02 a
K <sup>+</sup>	0,18±0,02 a	0,19±0,01 a	0,51±0,02 b	0,19±0,02 a	0,42±0,03 c	0,24±0,03 d	0,23±0,02 da
CEC (%)	56±0,95 a	57,94±2,08 a	80,44±1,5 b	38,36±1,52 c	80,71±1,54 a	36,54±0,84 c	37,79±1,97 c
NO <sub>3</sub> <sup>-</sup> (mg/kg soil)	11±0,95a	10,41±1,57a	17,23±0,75b	16,01±1,1bc	15,77±1,63c	17,55±1,33b	5,97±0,99d
P <sub>2</sub> O <sub>5</sub> (mg/kg soil)	28,63±0,76a	29,07±0,71a	24,72±1,02b	22,42±0,95c	23,23±0,88bc	24,53±1,05b	30,45±1,03d

H: Moisture, pH: Water Potential, EC: Conductivity; OM: Organic Matter, CaCO<sub>3</sub>: Total Limestone; CEC: Cation Exchange Capacity; NO<sub>3</sub><sup>-</sup>: Nitrate, P<sub>2</sub>O<sub>5</sub>: Assimilable Phosphorus.

**Table 4.** Correlation matrix.

	H	CE	pH <sub>H2O</sub>	pH <sub>KCl</sub>	CaCO <sub>3</sub>	MO	Ca	Mg	Na	K	CEC	NO <sub>3</sub>	P <sub>2</sub> O <sub>5</sub>
H	1,000												
CE	0,002	1,000											
pH <sub>H2O</sub>	0,497	0,241	1,000										
pH <sub>KCl</sub>	-0,580	0,011	0,688	1,000									
CaCO <sub>3</sub>	-0,556	-0,816	0,042	0,368	1,000								
MO	0,451	0,613	0,314	0,073	-0,732	1,000							
Ca	0,355	0,902	0,201	-0,007	-0,929	0,801	1,000						
Mg	0,410	-0,005	-0,292	-0,456	-0,265	-0,262	0,120	1,000					
Na	0,802	0,275	-0,461	-0,764	-0,680	0,315	0,451	0,673	1,000				
K	0,495	0,689	-0,224	-0,445	-0,796	0,518	0,730	0,403	0,817	1,000			
CEC	0,527	0,846	-0,066	0,316	-0,989	0,765	,943	,162	,629	,805	1,000		
NO <sub>3</sub>	0,262	0,289	0,398	0,229	-0,354	0,376	0,490	0,527	0,407	0,494	0,307	1,000	
P <sub>2</sub> O <sub>5</sub>	0,050	-0,389	-0,419	-0,332	0,266	-0,133	-0,448	-0,559	-0,232	-0,427	-0,225	-0,910	1,000

### 3.3. Correlation between physicochemical properties of soil

The PCA results concern the matrix of 7 stations and 13 physicochemical parameters. The first two axes alone provide 73% of the total information. The experience shows that most of the PCA information is usually provided by these two-factor axes F1 and F2. They define the F1 x F2 principal plane that we have chosen for our analysis.

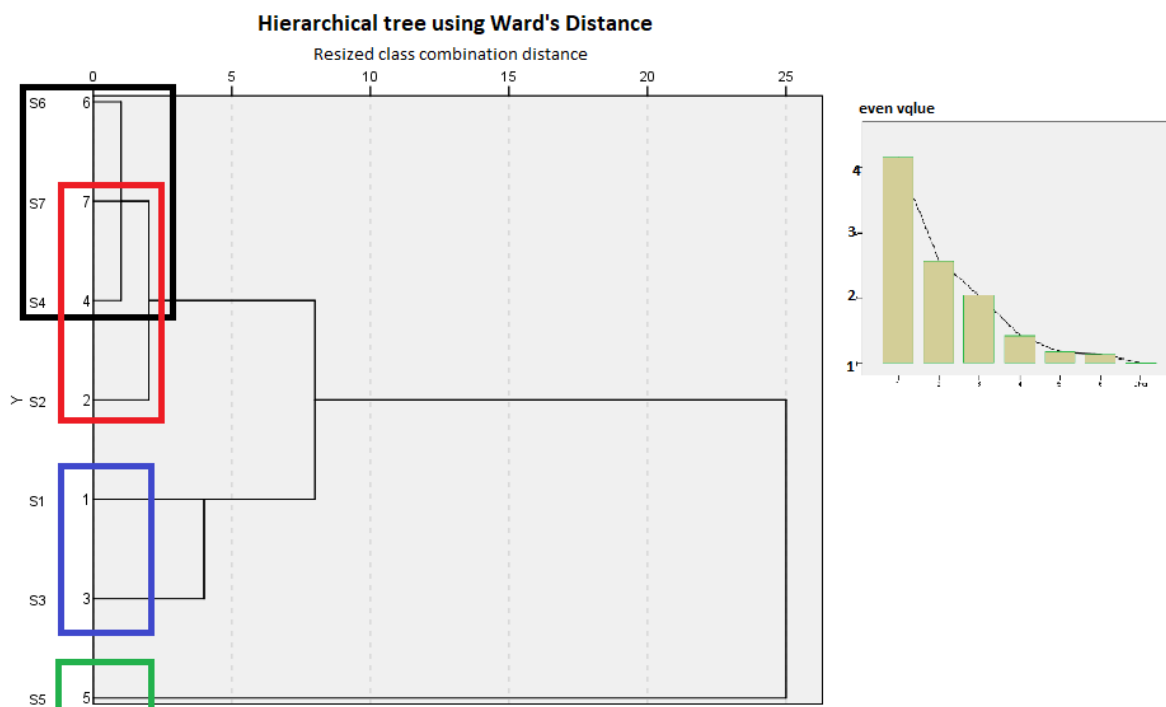
The correlation matrix between the variables shows a significant correlation between  $CEC * CaCO_3$  (-0.989);  $P_2O_5 * NO_3$  (-0.910);  $CEC * MO$  (-0.765);  $MO * SO_3$  (-0.732);  $pH_{H_2O} * pH_{KCl}$  (0.688) and  $CEC * Na$  (-0.973). There is also a lower degree of correlation between variables such as  $Na * Mg$  (0.673);  $K * MO$  (0.518);  $K * CE$  (0.689);  $MO * CE$  (0.613) and  $NO_3 * K$  (0.494). These different

correlations reflect each parameter's influence on the others and on soil quality (Table 4).

### 3.4. Hierarchical classification

One of the methods of presenting the results, which highlights relatedness (similarities or correlations), is Hierarchical Principal Component Classification (HCPC).

The objective is to represent soils in homogeneous classes so that soils in the same class have similar values in all the variables analyzed. Once these classes have been constructed, it is important to characterize the classes based on the variables or particular individuals<sup>20-21</sup>. The distances between soils are defined from the 14 variables chosen as active in the PCA. The first two axes of the PCA carried out on soils express about 73% of the information (Fig. 5).



Class 1 framed in black, class 2 in red, class 3 in blue, and class 4 in green.

**Figure 5.** Hierarchy tree obtained during the HCPC on CPA results

### 3.5. Description of classes

The soil of class 1 belongs to Taza's province; they are characterized by a high  $CaCO_3$  content and a low content of clay and exchangeable bases. These are also soils with lower levels of organic matter and CEC. The class 2 soils are characterized by an average value of CEC and EC with very low values in  $K^+$  and  $Na^+$  and relatively high in  $Ca^{2+}$  and  $Mg^{2+}$ . The class 3 soils are characterized by a varying amount of organic matter and high content of  $Ca^{2+}$ . The soil of the class 4 is characteristic because the silt fraction, CEC, EC,  $Ca^{2+}$  and MO are higher than for all soils. This class is also characterized by soils with very low  $CaCO_3$  content.

### 4. Discussion

Many factors influence the considerable variation in soil types found in the Taza-Taounate region.<sup>22</sup> Generally, it can be said that the nature of the bedrock or source materials, climate, weather, relief, and topography of the terrain are the most critical factors. There are also additional factors; vegetation and human intervention. This work evaluated various soil types to confirm the effects of physicochemical soil characteristics on plant formations and plant distribution in the study areas.

Granulometric analysis of the various soil samples from the study areas indicates that they are rich in

clay and silt. Indeed, Gabert<sup>23</sup> showed that the soils come from altering the immediately underlying rocks, present in the form of sandstone marls and especially flysch. These soils' characteristics are incredibly dependent on the bedrock from which they come, its texture, and the chemical and mechanical reactions responsible for its degradation from the depth to the surface. Soil granulometry affects soil's water content and retention capacity with the soil's porosity and permeability characteristics. On the other hand, high clay contents are beneficial for the plants because of its richness in minerals<sup>24</sup>. Its fertility allows the development of many plants with low leaching losses<sup>25</sup>.

In the same way, the clay contents of the surface layer in S1, S4, S5, S6, and S7 are less than those of the other stations. This may be caused by leaching and deposition of clay in the soil. The proportion of hydro-stable aggregates in the soil can be used as a basis for soil fertility and an essential indicator for soil quality assessment, which determines soil structure condition and is vital for the protection of soil organic carbon<sup>26</sup>.

Chemically, the results obtained in our study showed that the pH is alkaline to neutral at most sites. Soil alkalinity in the soils studied is primarily caused by the nature of the limestone-rich bedrock<sup>27</sup>. Moreover, all cases show that the pH (H<sub>2</sub>O) is higher than the pH KCl, indicating the presence of negatively charged colloids in the soils studied<sup>28</sup>. According to<sup>29</sup>, most cultivated plants grow well in neutral or slightly acidic soil, with mean values between 5.5 and 7. The pH variation depends on seasonal variations in reserve ion numbers on the clay-humus complex, soil water status, temperature, crop presence, or absence of an actively growing crop<sup>30</sup>. In general, this discussion leads us to believe that pH influences the soil fertility, biological activity, and structural stability.

The soil moisture is another factor influencing the coexistence of fauna and flora in the soil<sup>31</sup>. In all stations, humidity is generally high, with maximum values recorded at Ain Madiouna and Ther Souk in clay soils. These results were explained by Edahbi et al.<sup>32</sup>, who indicate that humidity levels increase as particle diameter decreases.

Conductivity is directly proportional to the soil's salt content. In this study, there is varies from station to station. This variation is mainly due to the salt content of the geological substratum in the area<sup>33,34</sup>. Saline soil is soil with an electrical conductivity greater than 4 ds/m. This study shows that soil salinity varied widely from station to station and directly influenced the distribution of vegetation in the study area.

The study of the relationships between vegetation types and ecosystem functioning was later deepened by the Phyto ecological approach, developed in forest ecology by several authors, as Corcket<sup>33</sup>.

They coupled detailed plant community descriptive approaches and quantification of key associated environmental variables such as the mesoclimate, topography, source rock, and soil.

The organic matter contents in the studied soils range from 0.97% to 2.29% (Table 4). These low values show a deficiency in soil organic matter, so the mineral matter is the main factor in cation exchange<sup>27</sup>.

Base cations, which function as nutrients, also play an essential part in neutralizing acidity and maintaining soil biological activity<sup>35</sup>. In all stations the calcium present in sufficient quantities can meet the plants' needs; the absorbent complex is practically saturated in calcium. Magnesium content is relatively high at Ther Souk, and Ras Lma, potassium, and sodium are low at all stations. Plants do not need sodium; in excess, it becomes harmful.

For the CEC, there are variations between study stations (Table 4). According to<sup>27</sup> the CEC variation suggests that there is a differentiation in mineralogical proportions of clay. This CEC decrease is explained by the variation in exchangeable cation concentrations from one station to another.

Nitrate (NO<sub>3</sub><sup>-</sup>) is the assimilable form available to plants; it is activated in soils, non-acidic, and rich in calcium, which is the case for the soils studied. For phosphorus, the assimilable form is represented by the exchangeable ions (PO<sub>4</sub><sup>3-</sup>) absorbed by the anionic complex; it is mobilized in a progressive manner<sup>35</sup>. The availability of phosphorus is well related to the nature and condition of the absorbent<sup>36</sup>. In our case, phosphorus is relatively important in the study stations compared to nitrates as it is present in the soil at low values.

## 5. Conclusion

The particle size analysis, the chemical and physicochemical parameters of the studied soils vary from one area to another, affecting plant biodiversity and the installation of aromatic and medicinal plant ecosystems.

Soil chemical characterization showed the presence of a low to neutral basic reaction (7.02 < pH < 7.81) with a low to medium content of limestone, assimilable nitrates, available phosphorus, organic matter, exchangeable basic cations, except for calcium, which is present in large quantities, as well as the cation exchange capacity.

After examining the physicochemical data, the soils studied can be considered acceptable ecologically and agriculturally. To protect and sustain these resources, a soil fertility monitoring of agricultural land and a conservation program against the anthropogenic and climatic effects of natural ecosystems is mandatory. In perspective, other physicochemical and biological soil analyses are

possible, followed by a study of the distribution of aromatic and medicinal plants in the Taza-Taounate region and its relationship with the different types of soil studied.

## References

- 1- C. Average, M. Desmond, The History of Natural Resource Management in Zimbabwe: A Chronicle of How Sustainable Resource Management Has Remained an Elusive Concept, *Journal of sustainable development in Africa*, **2017**, 9, 102-115.
- 2- E. Garbolino, P. De Ruffray, H. Brisse, G. Grandjouan, Relations entre plantes et climats en France : étalonnage de 1874 bio-indicateurs, *Comptes Rendus Biologies*, **2007**, 330, 159–170.
- 3- F.I. Woodward, *Climate and Plant Distribution*, Cambridge University Press, **1987**.
- 4- J.P.K. Shaumba, J. Lejoly, H.S.M. Nshimba, M.B. Ndjele, K.N. Ngbolua, Physiological, and pedo- morphological characteristics of vegetation communities of UMA dense forests in the Democratic Republic of the Congo, *International Journal of Innovation and Scientific Research*, **2017**, 30, 119–136.
- 5- S. Mekideche, L. Brakchi-Ouakour, L. Kadik, Impact des perturbations anthropiques sur la diversité végétale de la subéraie de Chréa, au nord de l'Algérie, *Bois & Forêts Des Tropiques*, **2018**, 337, 53-66.
- 6- Z. Zhang, W. Zhao, X. Gu, Changes resulting from a land consolidation project (LCP) and its resource environment effects: a case study in Tianmen City of Hubei Province, China. *Land Use Policy*, **2014**, 40, 74-82.
- 7- N.C. Brady, R.R. Weil, *Elements of the nature and properties of soils*, Pearson Prentice Hall, **2010**.
- 8- D.H. Wall, R.A. Virginia, Controls on soil biodiversity: insights from extreme environments, *Applied Soil Ecology*, **1999**, 13, 137–150.
- 9- J. Bethemont, P. Ozenda, *Les végétaux dans la biosphère*, Géocarrefour, **1982**, 57, 87.
- 10- R. Geiger, classifications of climates according to W. Köppen, Landolf-Börnstein: Numerical values and functions from physics, chemistry, astronomy, geophysics and technology, **1954**, 3, 603-607.
- 11- W. Köppen, *Das geographische system der klimat*, *Handbuch der klimatologie*, **1936**, 1-44.
- 12- Les données climatiques pour les villes du monde entier - Climate-Data.org.
- 13- Meme. Ministère de l'énergie, des mines, de l'eau et l'environnement : monographie énergétique et minière de la région Taza- al Hoceima-Taounate, Rapport, 16p, Rabat, **2011**.
- 14- H. Harmouzi, A. Dekayir, M. Rouai, Analyse géomorphologique et géologique du glissement de terrain d'Akchour (Rif, Maroc), *Geo-Eco-Trop.*, **2018**, 42, 19-32.
- 15- American Society for Testing Material, Standard Method for Particle-size analysis of Soil, D. 422-63 (Reapproved 1972) *Annual Book of ASTM Standards*, Part 19, **1974**, 70-80.
- 16- G. Aubert, *Méthode d'analyses des sols*, Centre régional de documentation pédagogique (Marseille), **1978**.
- 17- C. Mathieu, P. Françoise, E. Jeanroy, *Analyse chimique des sols : Méthodes choisies*. Tec & doc, **2003**.
- 18- A. Walkley, I.A. Black, An examination of the degtjareff method for determining soil organic matter, and a proposed modification of the chromic acid titration method, *Soil Science*, **1934**, 37, 29–38.
- 19- C. Afnor, *Qualité des sols 2 Volumes*, **1999**, 973.
- 20- K. Baba, L. Bahi, L. Ouadif, C. Cherradi, Application des méthodes d'analyses statistiques multivariées à la délimitation des anomalies de Sidi Chennane, *J. Mater. Environ. Sci.*, **2014**, 5, 1005-1012.
- 21- R. Monteville, *Analyse des caractéristiques techniques et fonctionnelles des élevages de porcs biologiques*, **2012**.
- 22- D. Baize, B. Jabiol, *Guide pour la description des sols*, 2ème édition revue et corrigée, Editions INRA, Paris, **2011**.
- 23- P. Gabert, G. Maurer, *Les montagnes du Rif marocain. Etude géomorphologique*, Méditerranée, **1970**, 1, 89-91.
- 24- A. Qlihaa, S. Dhimni, F. Melrhaka, N. Hajjaji, A. Srhiri, Caractérisation physico-chimique d'une argile Marocaine [Physico-chemical characterization of a Moroccan clay], *J. Mater. Environ. Sci.*, **2016**, 7, 1741-1750.
- 25- G.B. Tesfahunegn, L. Tamene, P.L.G. Vlek, Assessing Soil Properties and Landforms in the Mai-Negus Catchment, Northern Ethiopia, *Pedosphere*, **2016**, 26, 745–759.
- 26- T. Lan, S.W. Guo, J.W. Han, Y.L. Yang, K. Zhang, Q. Zhang, W. Yang, P.F. Li, Evaluation of physical properties of typical urban green space soils in Binhai Area, Tianjin, China, *Urban Forestry & Urban Greening*, **2019**, 44, 126430.
- 27- D. Touhtouh, Y. Moujahid, E.M.E. Faleh, R.E. Halimi, Caractérisations physicochimiques de trois types de sols du Sais, Maroc (Physicochemical characterizations of three types of soils of Sais, Morocco, *J. Mater. Environ. Sci.*, **2014**, 5.
- 28- C. Mulaji, P. Disa-Disa, I. Kibal, M. Culot, Diagnostic de l'état agropédologique des sols acides de la province de Kinshasa en république démocratique du Congo (RDC), *Comptes Rendus Chimie*, **2016**, 19, 820–826.
- 29- J.R. Landon, *Booker tropical soil manual: a handbook for soil survey and agricultural land evaluation in the tropics and subtropics*, New York; Thame, Oxon, England, **1991**.
- 30- J.P. Thorez, B. Lapouge-Déjean, *Le guide du jardin bio: Potager, verger, ornement*, édition



- revue et augmentée, Terre Vivante Editions, **2009**.
- 31-E. Lucot, P.M. Badot, S. Bruckert, Influence de l'humidité du sol et de la distribution des racines sur le potentiel hydrique du xylème dans des peuplements de chêne (*Quercus* sp) de basse altitude, *Ann For Sci.*, **1995**, 52, 173–182.
- 32-M. Edahbi, M. Khaddor, F. Salmoun, Caractérisation des sols du Nord du Maroc (Bassin Loukkos) (Characterization of the soils in North Morocco (Loukkos area)), *Mater. Environ. Sci.*, **2014**, 5, 2133-2138.
- 33-E. Corcket, Biodiversité et interactions biotiques dans les communautés végétales de l'Anthropocène : Mémoire d'habilitation à diriger des recherches, Université de Bordeaux, France, **2015**.
- 34-S.M. Mahamat, M.D. Diallo, O. Ndiaye, Influence des caractéristiques physico-chimiques des sols sur la flore et la végétation ligneuse de trois stations du tracé de la grande muraille verte du Tchad, *Journal of Applied Biosciences*, **2015**, 95, 8937–8949.
- 35-P. Duchauffour, Introduction à la science du sol - Sol, végétation, environnement, 6e édition, Paris, **2001**.
- 36-P. Duchauffour, Abrege de pedologie : Sol, végétation, environnement, 5ème édition, France, **1997**.